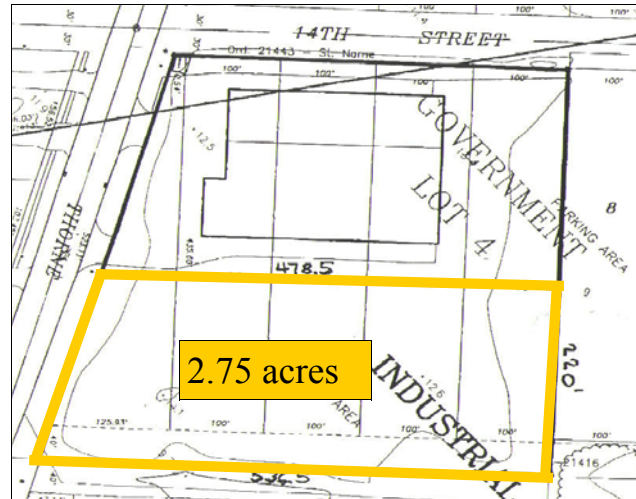


FOR LEASE

Land

Call 253-383-6000 for details



**1401 Thorne Road
Tacoma, WA**

Features:

- 2.75 acres
- M-3 zoning
- Fenced
- Small office trailer
- Graveled yard
- Port of Tacoma Area

For information, please contact:

Ray Schuler
253-383-6000
Schulerpro@aol.com

Derrick Urquhart
253-383-6000
Derrickpro@aol.com

**Schuler
Properties**
The Industrial Facility Solution™

Phone: 253.383.6000 • Fax: 253.383.4820 • 802 Labor Ready Bldg, 1015 "A" St • Tacoma, WA 98402 • www.schulerproperties.com

The information supplied herein is from sources we deem reliable. It is provided without any representation, warranty or guarantee, expressed or implied, as to its accuracy. Prospective Buyer or Tenant should conduct an independent investigation and verification of all matters deemed to be material, including, but not limited to, statements of income and expenses. CONSULT YOUR ATTORNEY, ACCOUNTANT OR OTHER PROFESSIONAL ADVISOR.